

TEACHER MEETING

If when we talk with students about the special opportunities available, the same must then be true for the first John Paul II teachers. This will be no ordinary group, and these will be extraordinary times to teach at JP II.

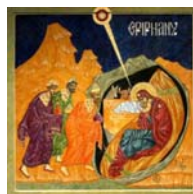
What will be different for John Paul II teachers? The chance to set the direction and traditions of a great Catholic high school; to truly know and affect the lives of students; to work closely with the whole faculty of the school, not just those in a department or grade level, and work as a team to build a Catholic school. For those first teachers, there will be the life-long satisfaction of knowing that you were the key ingredient in making the vision reality.

Of course what else will be different? The school will experience two accreditation visits in the first five years; high expectations for all students in a rigorous and challenging curriculum; the need to create all forms, papers, procedures, events, and activities for the first time; a wide variety of responsibilities; the need to improvise and make things happen.

The school invites all interested teachers to attend a teacher presentation on Tuesday, 3 February 2009, at 7 p.m. at OLPH, in the Pastoral Center. The hour-long presentation will review the school's mission and plan — specific to teachers — and unfold the timeline for resumes, letters of intent, and interviews.

NAME THE MASCOT

Just a reminder, that we are accepting *via* e-mail suggestions for the school's mascot selection. We have received five to-date, and would like to have many more to consider. Send your suggestion in, along with a brief explanation of why you think the should be considered (based on a reflection of the mission and vision of the school, the school's founding or locale, and/or the school's values).



HAPPY FEAST OF THE EPIPHANY

“*Rise up in splendour.*” (Is 60,1).

Notice how the prophet Isaiah speaks to the city of Jerusalem. He invites her to let herself be enlightened by her Lord, the infinite light that makes his glory shine over Israel. The people of God are called to become light themselves in order to direct the way of the nations, over whom hang "darkness" and "thick clouds" (Is 60,2). The prophetic word resounds with full meaning on this solemnity of the Epiphany of the Lord. The Magi, who come from the East to Jerusalem, are guided by a heavenly body (cf. Mt 2,1-2) and represent the first fruits of the peoples attracted by the light of Christ.

— John Paul II, Epiphany 2003

REMINDERS FOR STUDENTS

► **Class of 2014 Applications (frosch):** Remember that the deadline for first consideration is Friday, 16 Jan. Applications will be accepted after this, but in order to send out decisions on the first day for notification (Fri., 6 Feb.), we need the application packet by the 16th. For those whose grading period for the first semester extends into January, send just the first quarter results (and mail the full first semester grades later when available).

► **Class of 2013 Applications (sophs):** Remember to get your application in by Fri., 16 January as well. Applications will be accepted later, but it is important that we know of all interested sophomores. In order to open the school with a Class 2013 for sophs, we need to reach a certain number of applicants.

► **CALL THE SCHOOL NUMBER WITH ANY QUESTIONS ABOUT THE APPLICATION PROCESS.**

► **Student committee:** Remember all accepted students will be invited to participate in a student committee which will begin meeting monthly in late February.



6 Dec. '08: Our group of 8th grade test takers